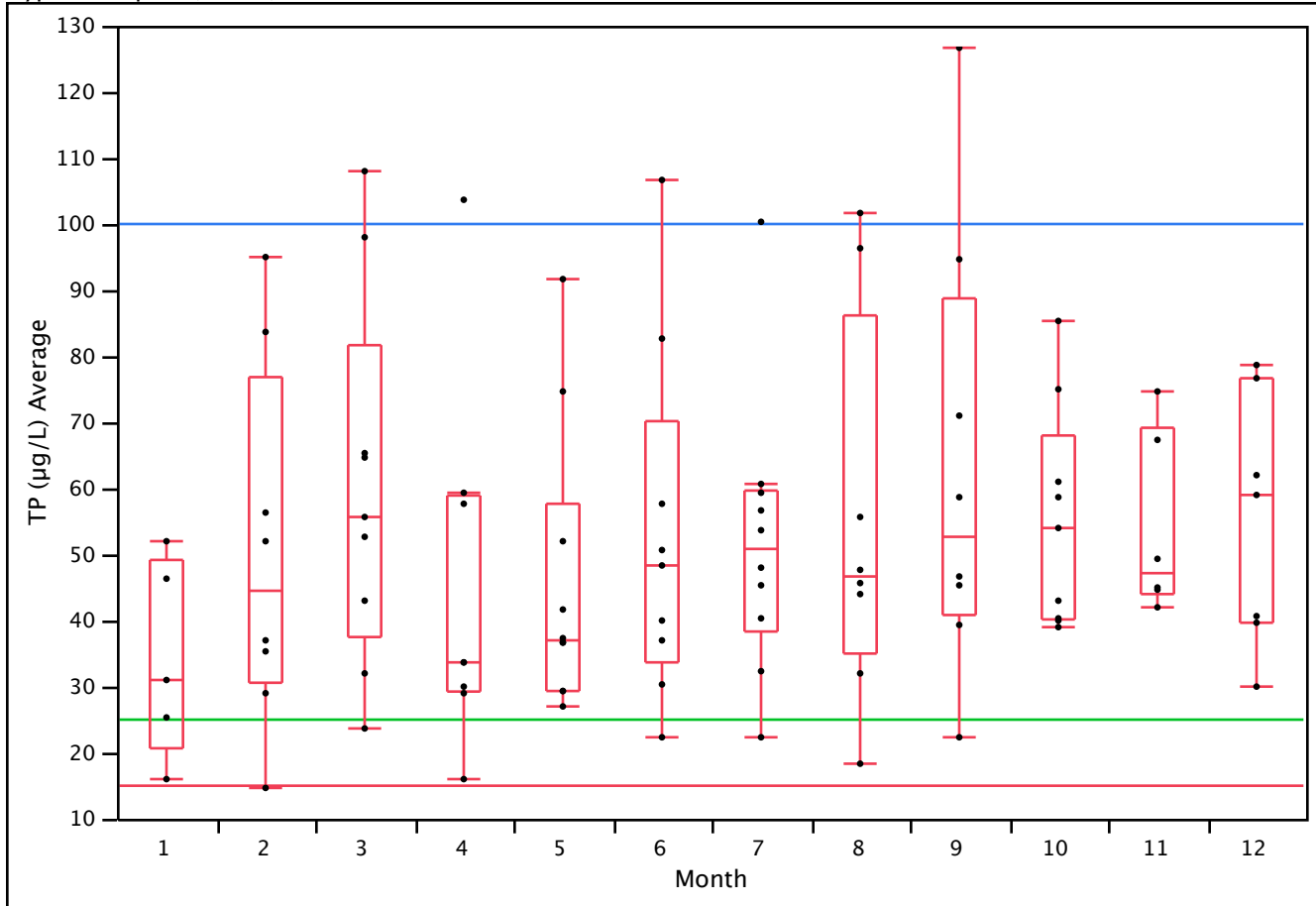


Leon: Blairstone TP ($\mu\text{g/L}$) Seasonal Trend

TP ($\mu\text{g/L}$) : Oligotrophic (<15) Mesotrophic (15-25) Eutrophic (25-100)
 Hypereutrophic (> 100)

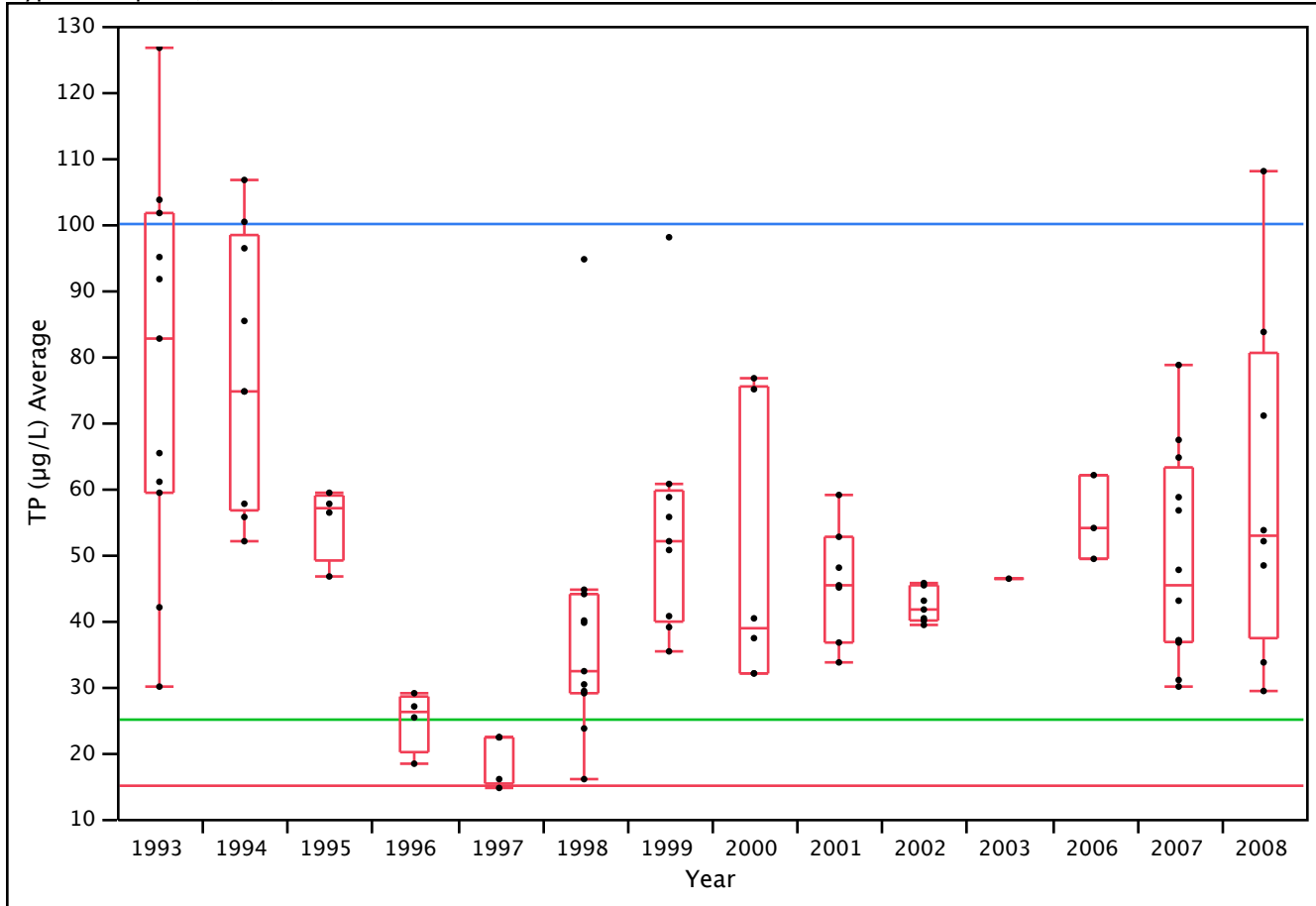


Quantiles

Level	Minimum	10%	25%	Median	75%	90%	Maximum
1	16	16	21	31	49	52	52
2	15	15	31	45	77	95	95
3	24	24	38	56	82	108	108
4	16	16	29	34	59	104	104
5	27	27	29	37	58	90	92
6	22	22	34	48	70	107	107
7	22	23	38	51	60	96	100
8	18	18	35	47	86	102	102
9	22	22	41	53	89	127	127
10	39	39	40	54	68	85	85
11	42	42	44	47	69	75	75
12	30	30	40	59	77	79	79

Leon: Blirstone TP ($\mu\text{g/L}$) Temporal Trend

TP ($\mu\text{g/L}$) : Oligotrophic (<15) Mesotrophic (15-25) Eutrophic (25-100)
 Hypereutrophic (> 100)

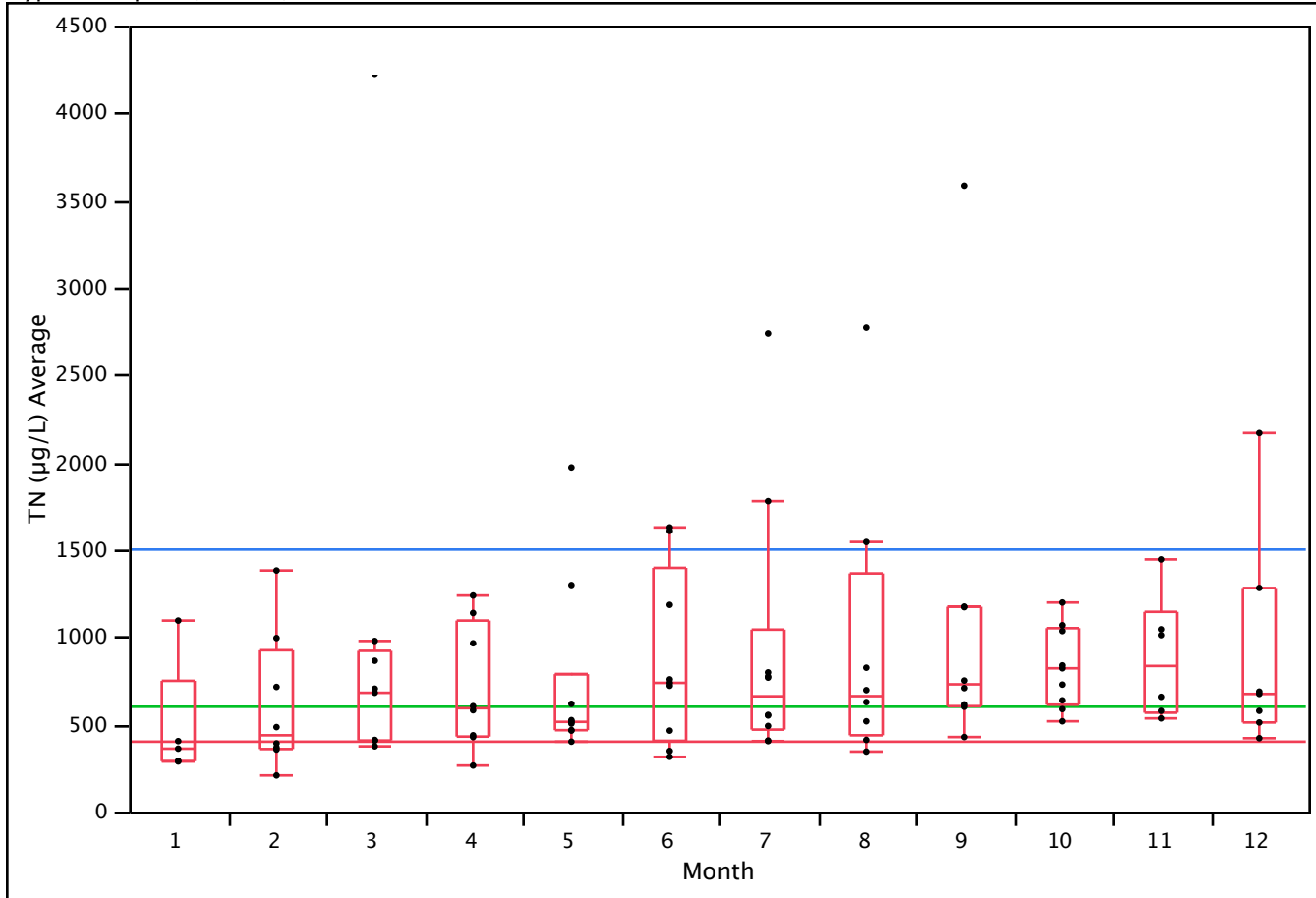


Quantiles

Level	Minimum	10%	25%	Median	75%	90%	Maximum
1993	30	32	59	83	102	122	127
1994	52	52	57	75	98	107	107
1995	47	47	49	57	59	59	59
1996	18	18	20	26	29	29	29
1997	15	15	15	22	22	22	22
1998	16	18	29	32	44	85	95
1999	35	35	40	52	60	98	98
2000	32	32	32	39	75	77	77
2001	34	34	37	45	53	59	59
2002	39	39	40	42	45	46	46
2003	46	46	46	46	46	46	46
2006	49	49	49	54	62	62	62
2007	30	30	37	45	63	75	79
2008	29	29	37	53	81	108	108

Leon: Blairstone TN ($\mu\text{g/L}$) Seasonal Trend

TN ($\mu\text{g/L}$) : Oligotrophic (<400) Mesotrophic (400–600) Eutrophic (600–1500) Hypereutrophic (> 1500)

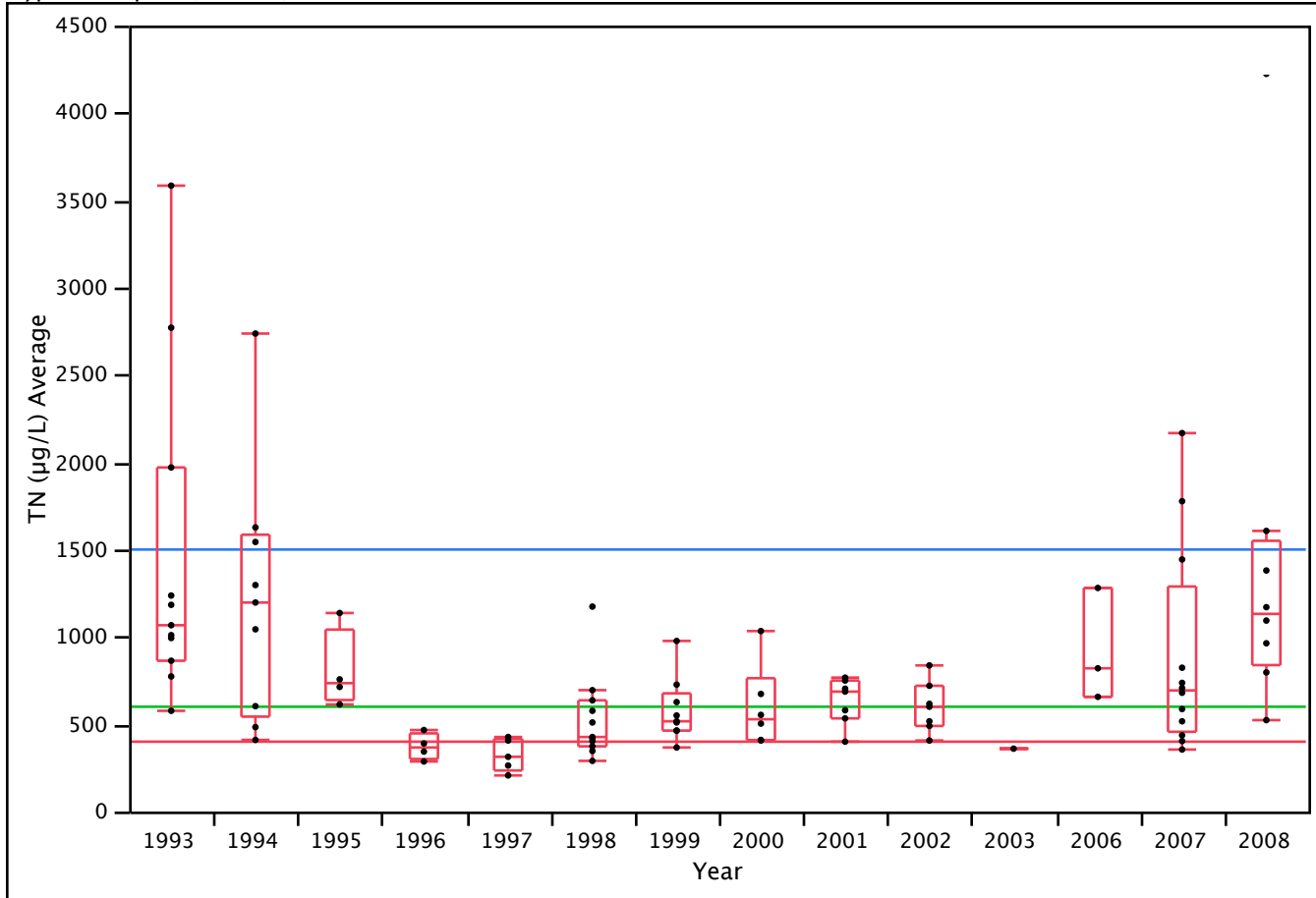


Quantiles

Level	Minimum	10%	25%	Median	75%	90%	Maximum
1	287	287	288	360	748	1093	1093
2	207	207	358	437	923	1380	1380
3	373	373	407	680	920	4223	4223
4	263	263	429	592	1093	1237	1237
5	400	406	466	513	787	1903	1970
6	313	313	405	737	1395	1627	1627
7	403	404	469	660	1042	2641	2737
8	343	343	437	661	1363	2770	2770
9	427	427	603	728	1173	3583	3583
10	517	517	612	820	1050	1197	1197
11	533	533	566	833	1143	1443	1443
12	420	420	510	673	1280	2167	2167

Leon: Blairstone TN ($\mu\text{g/L}$) Temporal Trend

TN ($\mu\text{g/L}$) : Oligotrophic (<400) Mesotrophic (400–600) Eutrophic (600–1500) Hypereutrophic (> 1500)

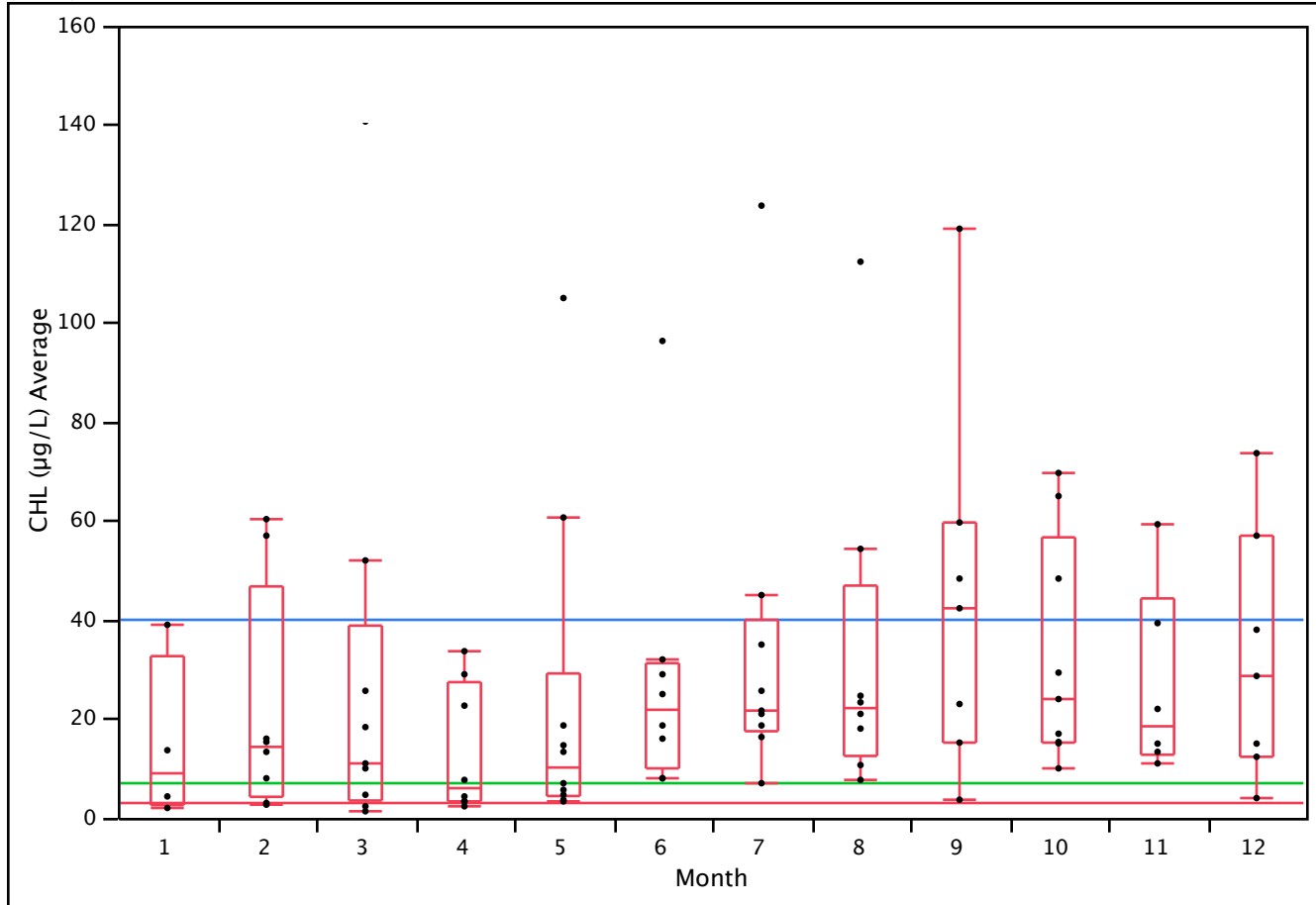


Quantiles

Level	Minimum	10%	25%	Median	75%	90%	Maximum
1993	577	616	863	1067	1970	3421	3583
1994	410	410	543	1197	1585	2737	2737
1995	613	613	638	735	1042	1137	1137
1996	287	287	301	367	448	467	467
1997	207	207	235	313	417	427	427
1998	290	301	373	427	637	1078	1173
1999	367	367	463	517	677	977	977
2000	407	407	409	528	763	1033	1033
2001	400	400	533	687	750	767	767
2002	407	407	490	600	720	837	837
2003	360	360	360	360	360	360	360
2006	657	657	657	820	1280	1280	1280
2007	355	370	457	693	1288	2050	2167
2008	523	523	838	1132	1550	4223	4223

Leon: Blirstone CHL ($\mu\text{g/L}$) Seasonal Trend

CHL ($\mu\text{g/L}$) : Oligotrophic (<3) Mesotrophic (3-7) Eutrophic (7-40) Hypereutrophic (> 40)



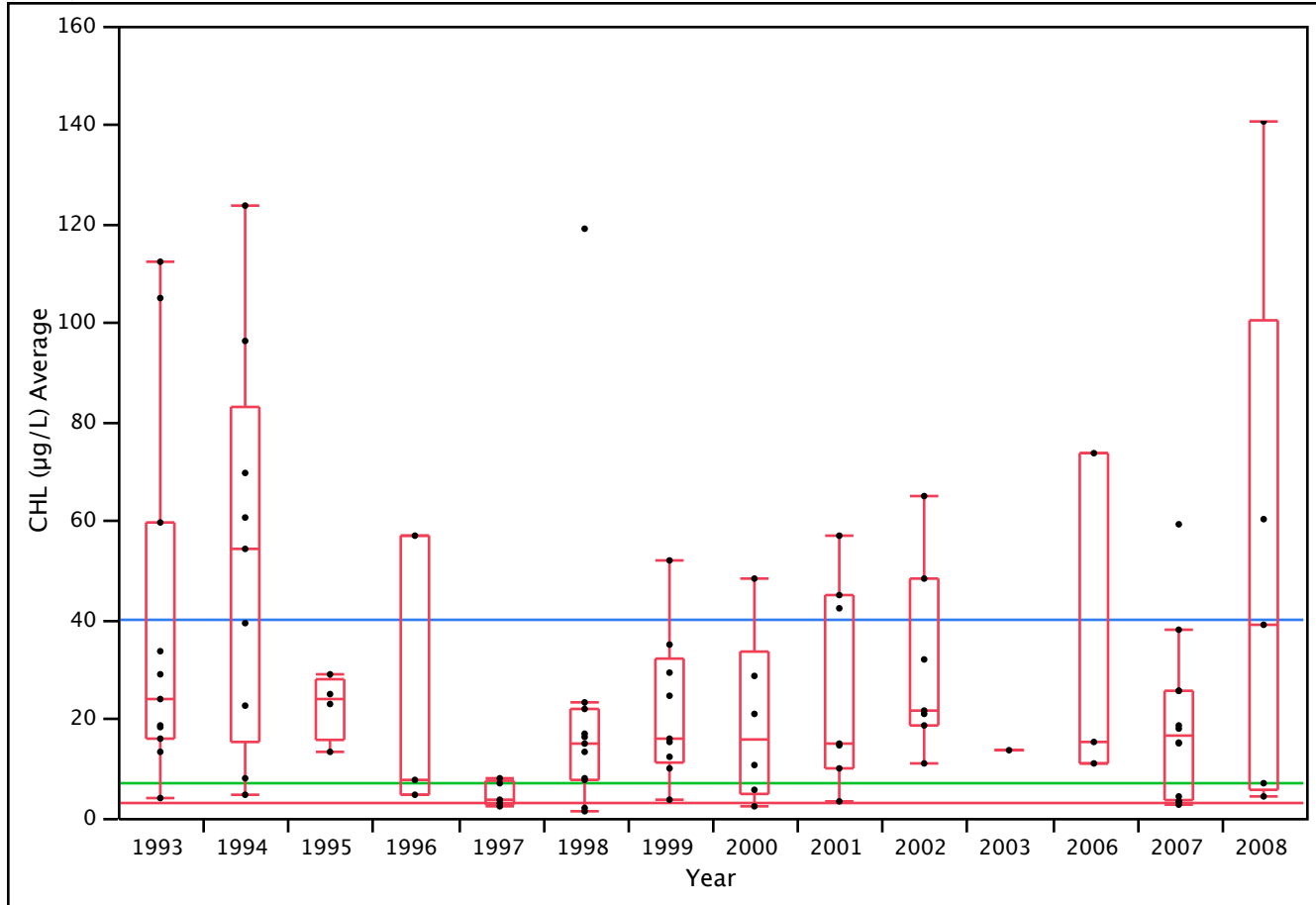
Missing Rows 4

Quantiles

Level	Minimum	10%	25%	Median	75%	90%	Maximum
1	2	2	3	9	33	39	39
2	3	3	4	14	47	60	60
3	1	1	4	11	39	141	141
4	2	2	3	6	27	34	34
5	3	3	4	10	29	101	105
6	8	8	10	22	31	96	96
7	7	7	18	22	40	124	124
8	8	8	13	22	47	112	112
9	4	4	15	42	60	119	119
10	10	10	15	24	57	70	70
11	11	11	13	19	44	59	59
12	4	4	12	29	57	74	74

Leon: Blairstone CHL ($\mu\text{g/L}$) Temporal Trend

CHL ($\mu\text{g/L}$) : Oligotrophic (<3) Mesotrophic (3-7) Eutrophic (7-40) Hypereutrophic (> 40)



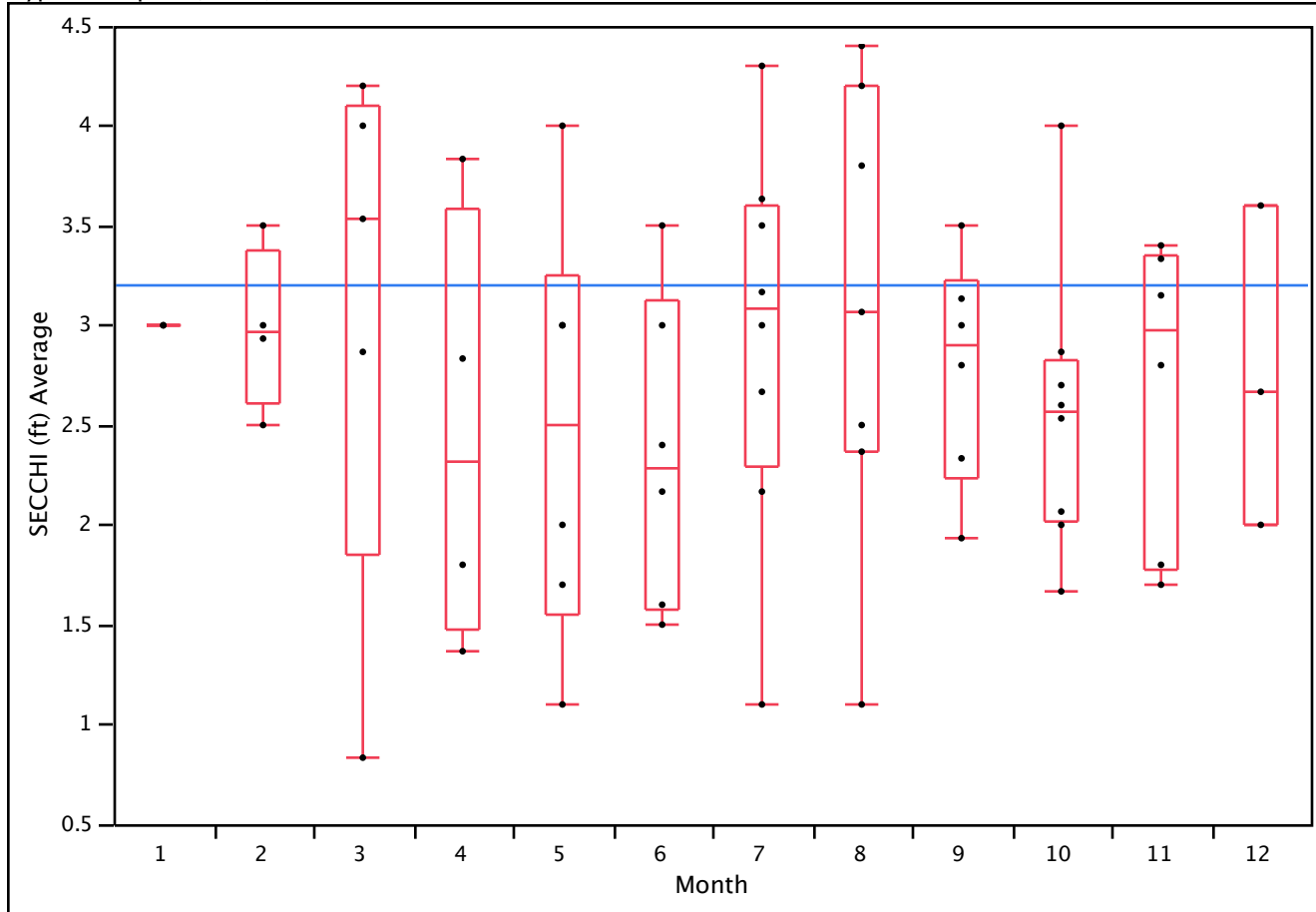
Missing Rows 4

Quantiles

Level	Minimum	10%	25%	Median	75%	90%	Maximum
1993	4	6	16	24	60	111	112
1994	5	5	15	54	83	124	124
1995	13	13	16	24	28	29	29
1996	5	5	5	8	57	57	57
1997	2	2	3	4	8	8	8
1998	1	1	8	15	22	100	119
1999	4	4	11	16	32	52	52
2000	2	2	5	16	34	48	48
2001	3	3	10	15	45	57	57
2002	11	11	19	22	48	65	65
2003	14	14	14	14	14	14	14
2006	11	11	11	15	74	74	74
2007	3	3	4	17	26	53	59
2008	4	4	6	39	101	141	141

Leon: Blairstone SECCHI (ft) Seasonal Trend

SECCHI (ft) : Oligotrophic (>13.1) Mesotrophic (13.1-8.2) Eutrophic (8.2-3.2) Hypereutrophic (< 3.2)



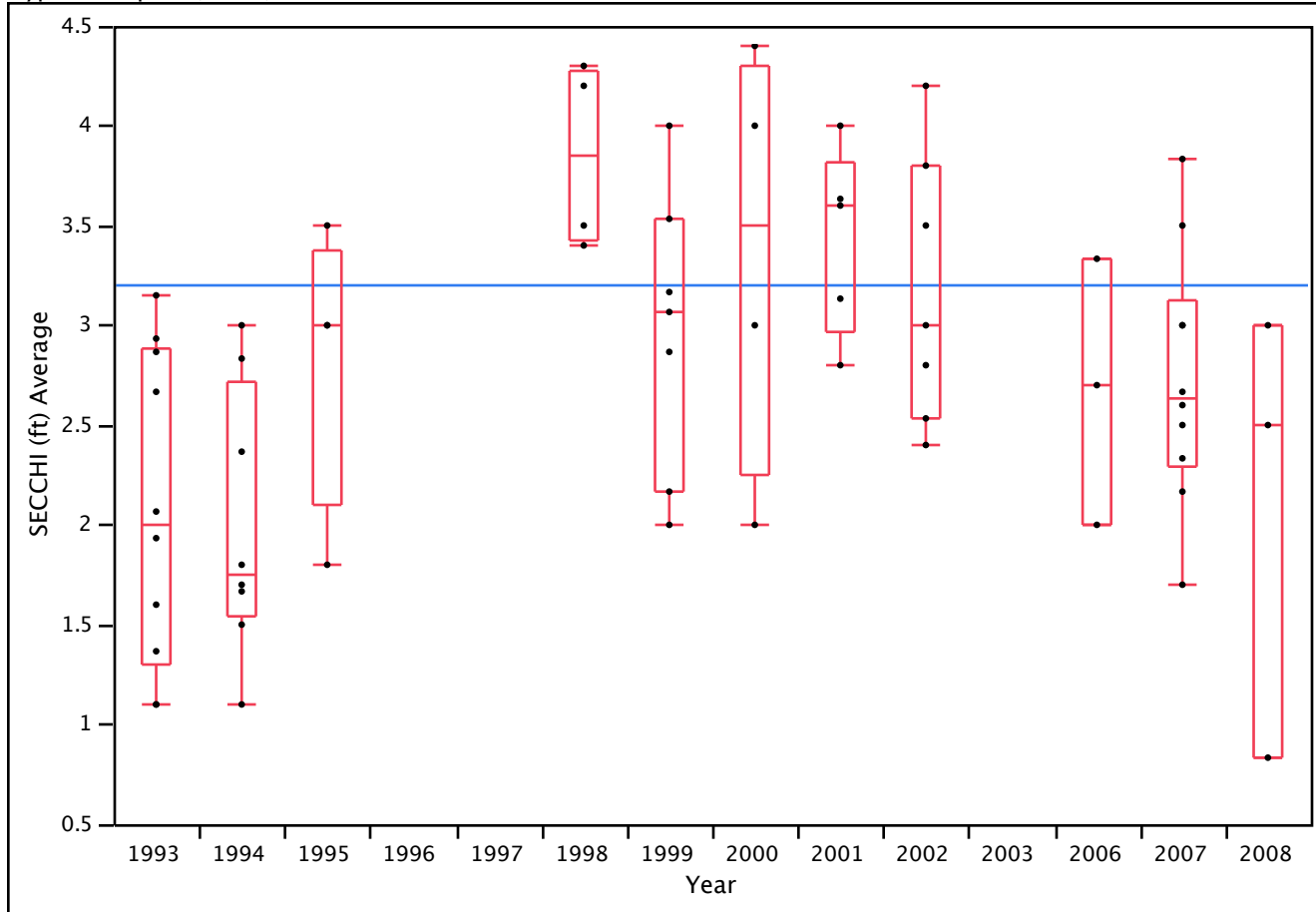
Missing Rows 32

Quantiles

Level	Minimum	10%	25%	Median	75%	90%	Maximum
1	3.0	3.0	3.0	3.0	3.0	3.0	3.0
2	2.5	2.5	2.6	3.0	3.4	3.5	3.5
3	0.8	0.8	1.9	3.5	4.1	4.2	4.2
4	1.4	1.4	1.5	2.3	3.6	3.8	3.8
5	1.1	1.1	1.6	2.5	3.3	4.0	4.0
6	1.5	1.5	1.6	2.3	3.1	3.5	3.5
7	1.1	1.1	2.3	3.1	3.6	4.3	4.3
8	1.1	1.1	2.4	3.1	4.2	4.4	4.4
9	1.9	1.9	2.2	2.9	3.2	3.5	3.5
10	1.7	1.7	2.0	2.6	2.8	4.0	4.0
11	1.7	1.7	1.8	3.0	3.4	3.4	3.4
12	2.0	2.0	2.0	2.7	3.6	3.6	3.6

Leon: Blirstone SECCHI (ft) Temporal Trend

SECCHI (ft) : Oligotrophic (>13.1) Mesotrophic (13.1-8.2) Eutrophic (8.2-3.2) Hypereutrophic (< 3.2)



Missing Rows 32

Quantiles

Level	Minimum	10%	25%	Median	75%	90%	Maximum
1993	1.1	1.1	1.3	2.0	2.9	3.1	3.2
1994	1.1	1.1	1.5	1.8	2.7	3.0	3.0
1995	1.8	1.8	2.1	3.0	3.4	3.5	3.5
1996
1997
1998	3.4	3.4	3.4	3.9	4.3	4.3	4.3
1999	2.0	2.0	2.2	3.1	3.5	4.0	4.0
2000	2.0	2.0	2.3	3.5	4.3	4.4	4.4
2001	2.8	2.8	3.0	3.6	3.8	4.0	4.0
2002	2.4	2.4	2.5	3.0	3.8	4.2	4.2
2003
2006	2.0	2.0	2.0	2.7	3.3	3.3	3.3
2007	1.7	1.7	2.3	2.6	3.1	3.8	3.8
2008	0.8	0.8	0.8	2.5	3.0	3.0	3.0